

# HMF 340-K



**WEST-TRANS**  
EQUIPMENT & SERVICE



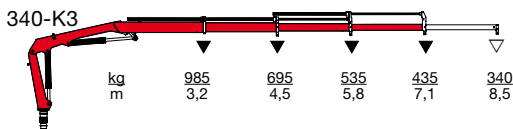
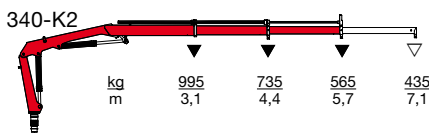
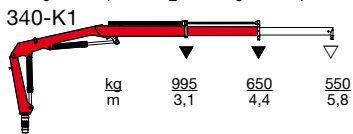
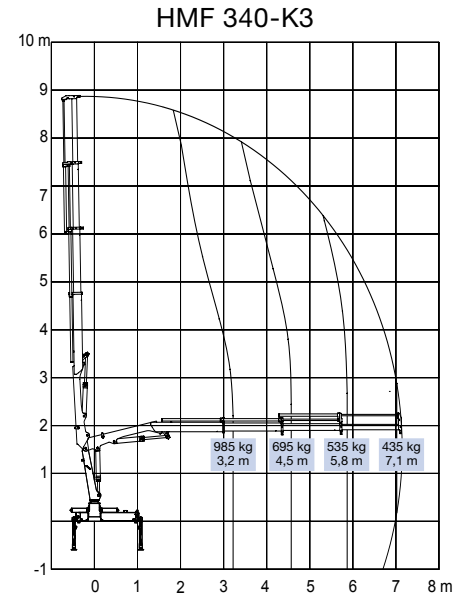
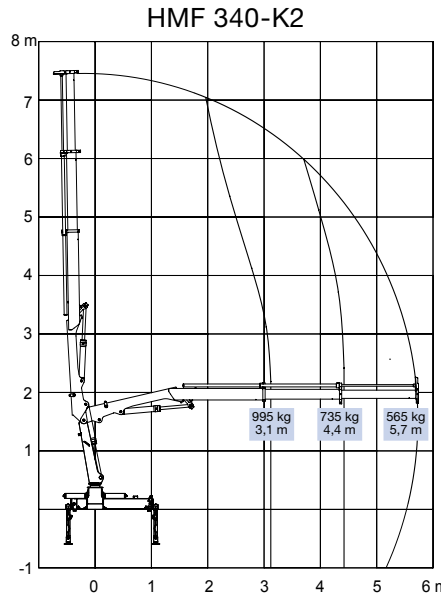
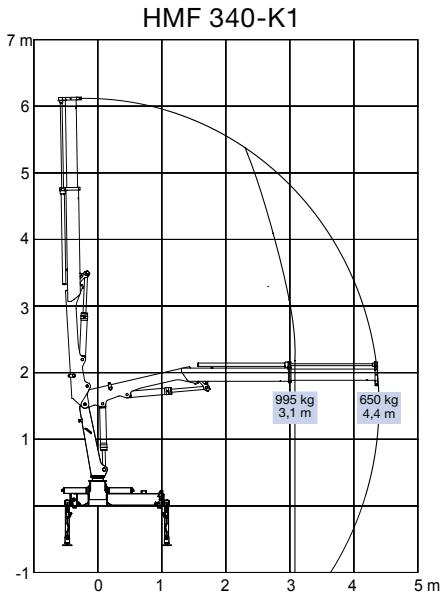
- power to lift.

# HMF Knuckle Boom Loader 340-K

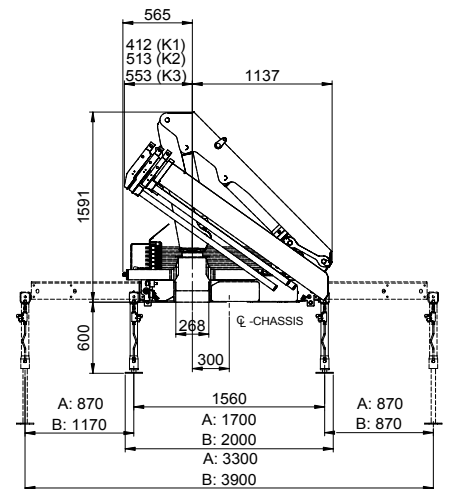
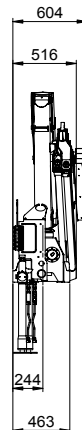
## A sturdy and versatile Loader with great Flexibility

- Compact design with short platform length offers good utilization of the truck body.
- A smaller loader designed with the big loader's characteristics.
- Available up to three hydraulic extensions as well as manual extensions.
- Equipped with link arm offering both increased hook height close to the column and increased lifting capacity at long reach.
- Reliable and sturdy design.
- Available with radio remote control as an option.
- Available with 2 extra valves for grab and rotator.

| Loading group B3                 |       | 340-K1 | 340-K2 | 340-K3 |
|----------------------------------|-------|--------|--------|--------|
| Load moment                      | tm    | 3.2    | 3.2    | 3.2    |
| Hydraulic reach                  | m     | 4.4    | 5.7    | 7.1    |
| Slewing torque                   | kgm   | 550    | 600    | 600    |
| Slewing angle                    | °     | 370    | 370    | 370    |
| Height above chassis             | mm    | 1591   | 1591   | 1591   |
| Width, folded, standard          | mm    | 1700   | 1700   | 1700   |
| Width, folded, extra             | mm    | 2000   | 2000   | 2000   |
| Length of base, no extra valves  | mm    | 516    | 516    | 516    |
| Stabilizer spread, standard      | mm    | 3300   | 3300   | 3300   |
| Stabilizer spread, long          | mm    | 3900   | 3900   | 3900   |
| Weight excl. stabilizers         | kg    | 418    | 468    | 508    |
| Weight of stabilizers, standard  | kg    | 72     | 72     | 72     |
| Working pressure                 | MPa   | 22.0   | 24.0   | 24.0   |
| Pump performance                 | l/min | 15     | 15     | 12     |
| Power consumption                | kW    | 5.5    | 6.0    | 5.0    |
| Oli tank capacity, separate tank | l     | 20     | 20     | 20     |



▼ Lifting capacity without manual extensions  
 ▽ Lifting capacity with manual extensions



A = Stabilizer spread = 3.300  
 B = Stabilizer spread = 3.900

## WEST-TRANS EQUIPMENT & SERVICE

**NSW** Unit A, 9 Cunneen Street, Mulgrave NSW 2756 Ph: (02) 4587 7411 E: sales.nsw@west-trans.com.au  
**VIC** 54 Venture Drive, West Sunshine VIC 3020 Ph: (03) 9325 1114 E: sales.vic@west-trans.com.au  
**WA** 71 Barberry Way, Bibra Lake WA 6163 Ph: (08) 9494 2929 E: sales.wa@west-trans.com.au  
**QLD** Ph: 0411 244 717 E: sales.qld@west-trans.com.au

[www.west-trans.com.au](http://www.west-trans.com.au)

We reserve the right to introduce improvements and modifications



Højbjerg Maskinfabrik A/S • Oddervej 200 • DK-8270 Højbjerg  
 Tel.: +45 8627 0800 • Fax: +45 8627 0744 • info@hmf.dk

[www.hmf.dk](http://www.hmf.dk)

Z008076-4